

Mark Fox Co. Real Estate

# HIGH VALLEY RANCH ON CHEROKEE CREEK

San Saba County, TX



# HIGH VALLEY RANCH

[www.markfoxco.com](http://www.markfoxco.com)

# PROPERTY DETAILS

*High Valley Ranch on Cherokee Creek is a breathtaking 388+/- acre gem rarely found on the market with rolling hills, far-reaching views, open pastures on hill tops, and approximately 3,100 feet of both sides of Cherokee Creek.*

- 388 +/- acres
- 3,100 feet on both sides of Cherokee Creek
- 5 Bedroom/ 3 Bathroom Barndominium
- Diverse Terrain including:
  - Rolling hills
  - Far-reaching views
  - Open pastures
  - 3 Hill-tops
- Crystal Clear lake
- Plenty of cover for wildlife
- Great hunting and fishing



# PROPERTY DETAILS

- **Location:** 25 min Southeast of San Saba, 25 min Southwest of Lometa, 2 hours from Central Austin, 2.5 hours to DFW, 2.5 hours from San Antonio, 4.5 hours from Houston
- **Water:** 2 wells, 3,100+ feet on both sides of Cherokee Creek



# HIGH VALLEY RANCH

[www.markfoxco.com](http://www.markfoxco.com)



# HIGH VALLEY RANCH

[www.markfoxco.com](http://www.markfoxco.com)



# HIGH VALLEY RANCH

[www.markfoxco.com](http://www.markfoxco.com)

PERSONNEL

[Click to view](#)

[Additional Information/Photos](#)

[HIGH VALLEY RANCH](#)

[www.markfoxco.com](http://www.markfoxco.com)





# HIGH VALLEY RANCH

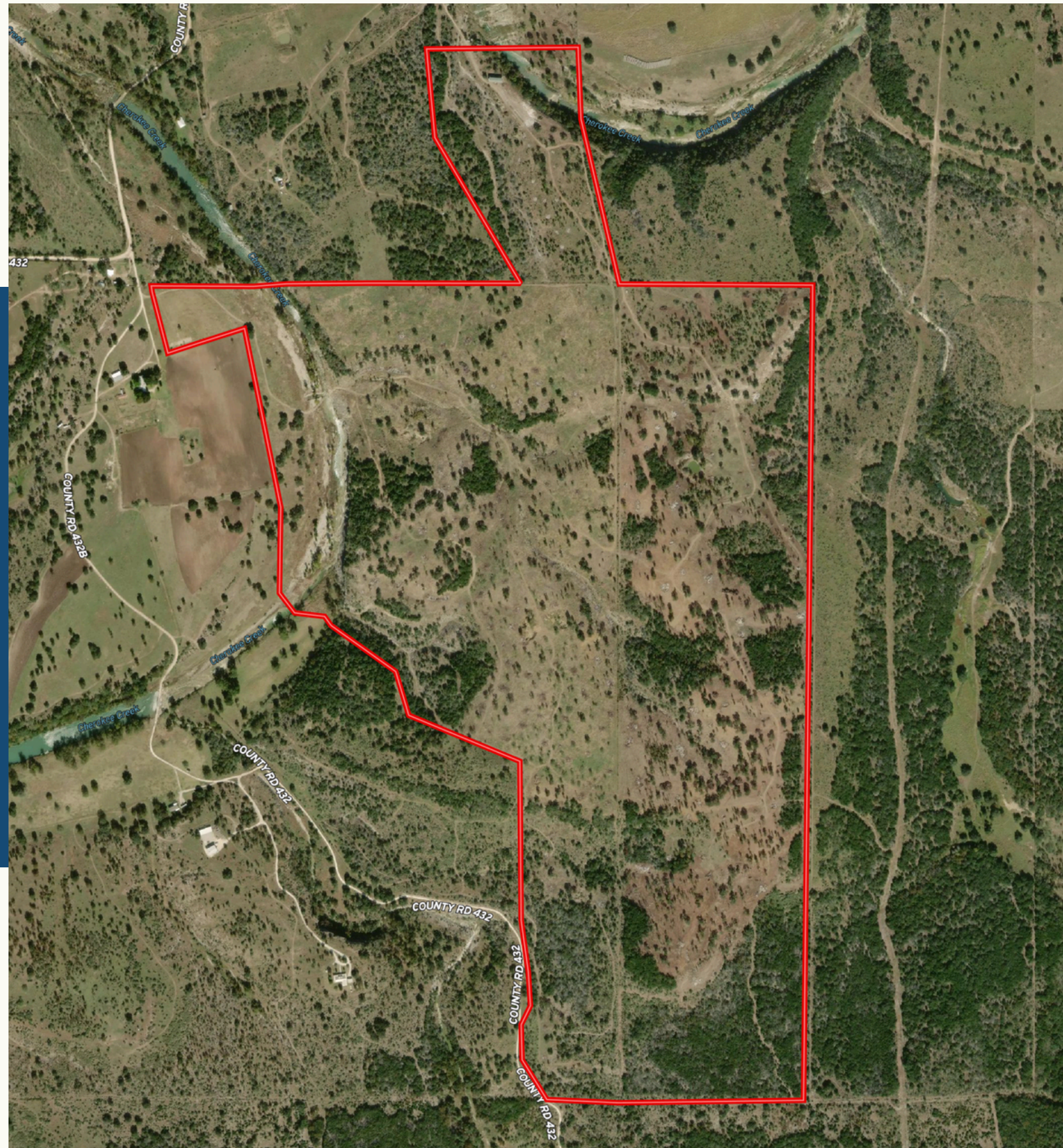
[www.markfoxco.com](http://www.markfoxco.com)



[Click to view](#)  
**INTERACTIVE MAP**

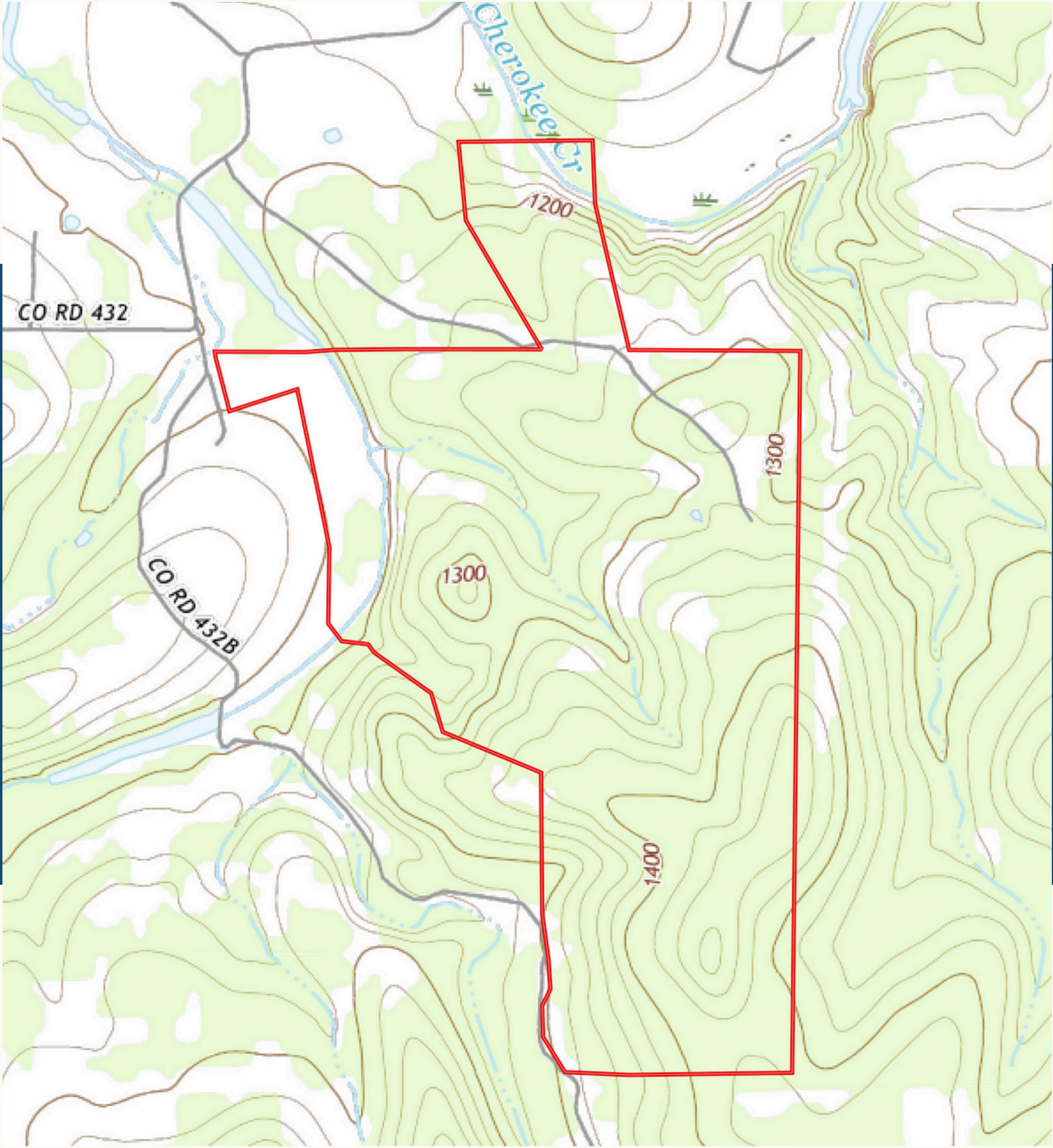
**HIGH VALLEY RANCH**

[www.markfoxco.com](http://www.markfoxco.com)



# HIGH VALLEY RANCH

[www.markfoxco.com](http://www.markfoxco.com)



# LEARN MORE

Todd Fox | Farren Fox

(512) 755-4433 | (512) 755-1547

todd@markfoxco.com | farren@markfoxco.com

[www.markfoxco.com](http://www.markfoxco.com)

[markfoxco@gmail.com](mailto:markfoxco@gmail.com)

515 Hwy 281

Marble Falls, TX 78654